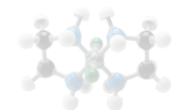


Competent, Flexible, Customer Oriented



Company Information



Information

Location

Established

GL

Membership

Partnership



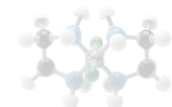
Bensheim, Germany

1. January 1999

Wolfgang Eberle (CEO)

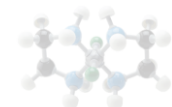
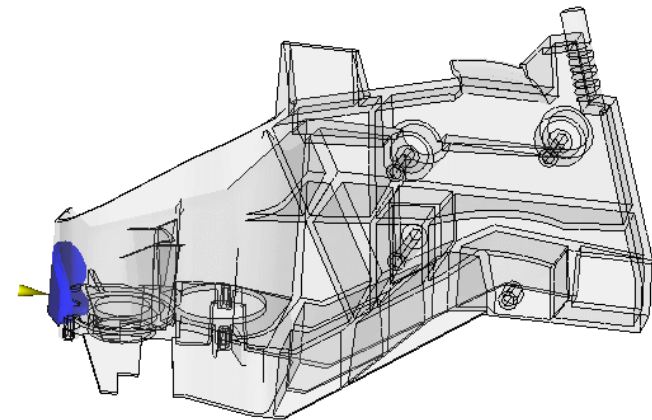
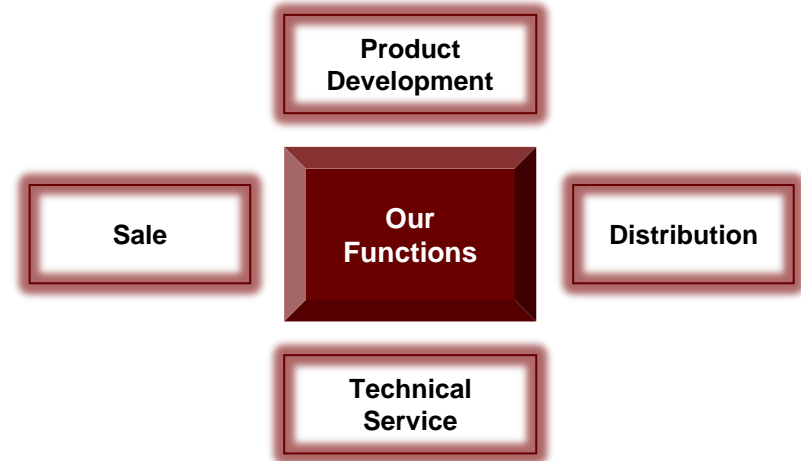
GKV

Establishment of strategic partnerships
with polymer manufacturers acting world-
wide

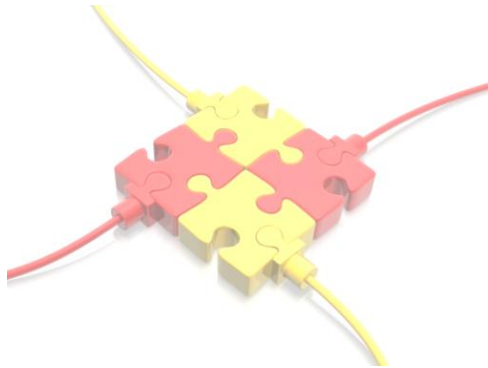


Company Information

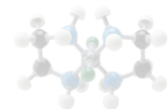
- We provide our customers with full range of services: from the projects initial planning, including choosing the suitable material, technical consulting until finding the best material solutions—each step and detail would be considerably carried out.
- Our service product covers the entire spectrum of plastics, so we can offer the best product with the optimal price.
- In cooperation with our partner PEG, we are able to offer moldflow analysis of every product for customers.
- Our global industrial networking enables us to offer various material certifications and approvals (FDA, FMVSS, IMDS, Sony Green Partner, REACH, KTSN, EN 71, GM, NSF)



Unsere Kunststoffe

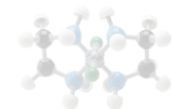


General Material – Information



▶ Kunststoffe / Plastics		▶ Product Information	
Longlite® PBT	1100 series 3000 series 4000 series 5000 series 6000 series	unfilled (high flow) GF & mineral-reinforced grades flame retardant halogen-free low warpage grades	
PBT Blends	PA/PBT PC/PBT PBT/ABS PBT/ASA PBT/PET		
Acetal Copolymer POM	standard grades GF-reinforced grades wear-resistant & lubricated grades toughened grades weatherproof grades low emission grades	M90/M25/M120/M270/M350 GF25 SF-10 / SF-5 /MD-1 ST-20/ST-15 M90-35 M90 01	
Polyamide 6/66	unfilled (high flow) grades GF & mineral-reinforced grades flame retardant grades halogen-free grades halogen & phosphorus-free grades		
PC	GF-reinforced grades weatherproof grades crack-resistant grades flame retardant grades antistatic grades		
ABS	unfilled heat-resistant grades high gloss grades green ABS based on natural green resources		
PC Alloys	PC/ABS PC/PS, PC/HIPS PC/PBT, PC/PET PC/PE PC/ASA		
PPE (PPO)	GF-reinforced grades mineral-reinforced grades heat-resistant grades flame retardant grades electro-conductive grades	PPE-2211 PPE-6688 PPE-1111 PPE-6666, PPE3311/33222 PPE-1111 RS61	

▶ Kunststoffe / Plastics		▶ Product Information	
PMMA	MG820 MG840 MG888	MG515 MG555	
TPE/TPR	TPU TPO	TPV SEBS	
TPEE	40D shore 55D shore		
PP	PP unfilled grades PP-reinforced (mineral, glass fibre) PP & long glass fibre PP flame retardant PP high gloss & high stiffness grades		
GPPS/HIPS	GPPS HIPS FR		
PMC and EMC	general purpose grades electronic grades high heat grades impact & special grades ammonia-free		
PPS	glass fibre-reinforced grades glass fibre & mineral-reinforced grades super toughened grades scratch-resistant grades		
LCP	LCP -300 series LCP -270 series		
Long Carbon Chain Polyamide	PA610 PA612 PA1010 PA1212		
PES PEEK PPSU	powder grades injection moulding grades extrusion grades glass fibre-reinforced grades carbon fibre-reinforced grades		
PA10T PA6T	0-50% glass fibre-reinforced grades high melting point (up to 316 grad) flame retardant, brominated flame retardant, free of halogen and red phosphorous		





Click Plastics AG – We are your partner of Engineering Plastics

CEO: **Wolfgang Eberle** ☎ +49 (6251) 770690-10 ✉ wolfgang.eberle@clickplastics.com

Marketing Director: **Ralf Eberle** ☎ +49 (6251) 770690-20 ✉ ralf.eberle@clickplastics.com

Sales / Technical Service:

Dieter Schwittay ☎ +49 (6251) 770690-50 ✉ dieter.schwittay@clickplastics.com

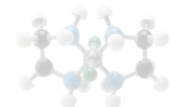
Jörg Frühwald ☎ +49 (6251) 770690-40 ✉ joerg.fruewald@clickplastics.com

Customer Service:

Pittaya Pelka ☎ +49 (6251) 770690-60 ✉ pittaya.pelka@clickplastics.com

Christine Winkler ☎ +49 (6251) 770690-60 ✉ christine.winkler@clickplastics.com

Gamze Türkmen ☎ +49 (6251) 770690-60 ✉ gamze.tuerkmen@clickplastics.com



Thanks for your attention!

Click Plastics AG

Ihr Partner für Engineering Plastics...

